

Who qualifies?

You may qualify for the NSFAS bursary at the Financial Aid Office / Student Support Services on Campus if:

- you are **registering for the first-time** for an **undergraduate qualification and have been admitted**
- you are a **South African citizen**
- your **combined annual household income** does not exceed R350 000 per annum

Who does not qualify?

- Students with a **combined annual household income** of more than R350 000 per annum.
- Students who have **already applied for and qualify for NSFAS funding** for the 2018 academic year (students who have previously received NSFAS funding and who qualify for NSFAS funding for the 2018 academic year will receive a bursary).
- **Foreign students** (any student who is not a South African citizen).

What is a combined annual household income?

This is the total income earned by the student and his or her direct family (spouse, mother, father or legal guardian) in the form of wages, salaries, grants, pensions or other sources of income, including rental or business income. The gross combined annual household income (income before deductions) may not exceed R350 000 per annum.

When can I apply?

NSFAS direct applications are closed for 2018. Therefore, NSFAS will not be re-opening or accepting any applications for any students.

All students wishing to access the new DHET funding will have to do so via the **registration process at the relevant institution of study**. Please enquire the Student Support Services or the Financial Aid Office.

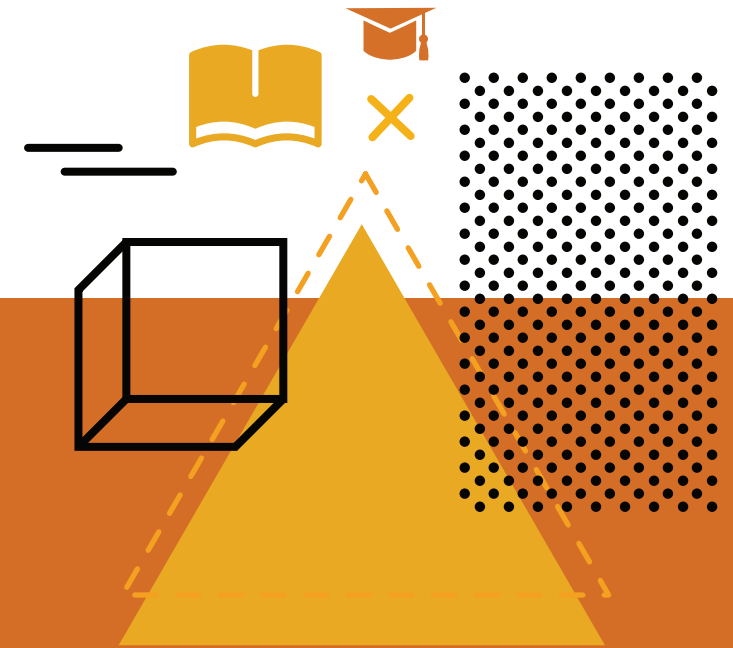
How do I apply?

As part of the registration process, you will be provided with an option to apply for the DHET funding.

Consent forms need to be completed and submitted to institutions to authorise NSFAS to complete credit checks in order to verify household income. Registration fees may be applicable, please seek advice from your institution.

What happens when a returning NSFAS student has outstanding fees

NSFAS only makes payments to the institution after the final results are submitted by the institution. Without year-end results, NSFAS may not be able to proceed with final payment. Outstanding fees will be settled for 2017, between the institution and NSFAS as soon as an accurate claim is submitted. This should not prevent returning students to register in 2018 if there is proof that the student was funded by NSFAS in 2017.



Where to go:

Enquire at the Financial Aid Office, Student Support Services or a NSFAS official on campus.



Contact details

NSFAS:

For more information on NSFAS funding visit www.nsfas.org.za or contact us at info@nsfas.org.za or 086 006 7327. Follow us on Twitter @myNSFAS or Facebook at National Student Financial Aid Scheme

CACH:

www.cach.dhet.gov.za, 0860 356 635 or sms your name and ID number to 49200 and CACH will call you back.



You too can now receive NSFAS funding!

What you need to know

- 1** If you are a **first-time entering student**, and your application for the 2018 NSFAS funding is approved, NSFAS will pay your 2018 student fees to any university or TVET college, provided you have been granted admission to study.
- 2** If you have not been accepted for admission to study, but qualify for NSFAS funding, NSFAS will not be able to process your funding or force institutions to consider your application for admission. **This means that without admission, there will be no NSFAS funding.**
- 3** If you are an **existing NSFAS funded student (who has previously received a NSFAS loan and you will be continuing in 2018)**, your 2018 NSFAS loan will then be converted to a bursary that will cover your full cost of study. You are not required to do anything. Both your university / TVET College and NSFAS will merge your information accordingly.
- 4** If you are an **existing student in 2018, but are not funded by NSFAS**, you will need to pay your own student fees.

Fraud or Corruption:

Email: nsfas@thehotline.co.za
Fax2Email: 086 7261 681
Call Back Number: 072 595 9139
Postal Address: P O Box 21076, Valhalla, 0137
Tel No.: 0800 203 900

Physical Address

2nd Floor, House Vincent
10 Brodie Road
Wynberg Mews
Cape Town

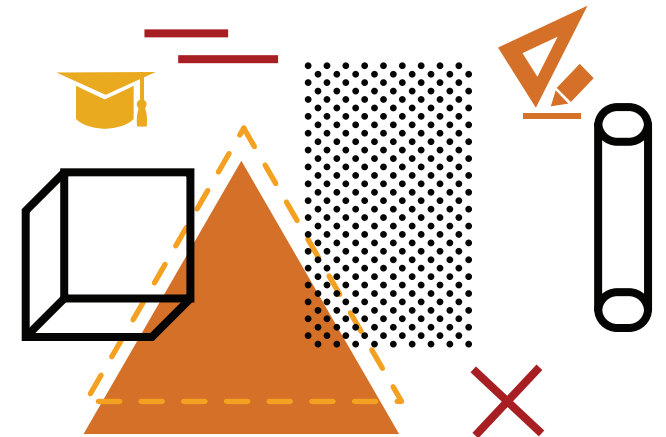
Postal Address

Plumstead
7801
South Africa



National Student Financial Aid Scheme

R350K Funding



All You Need to Know