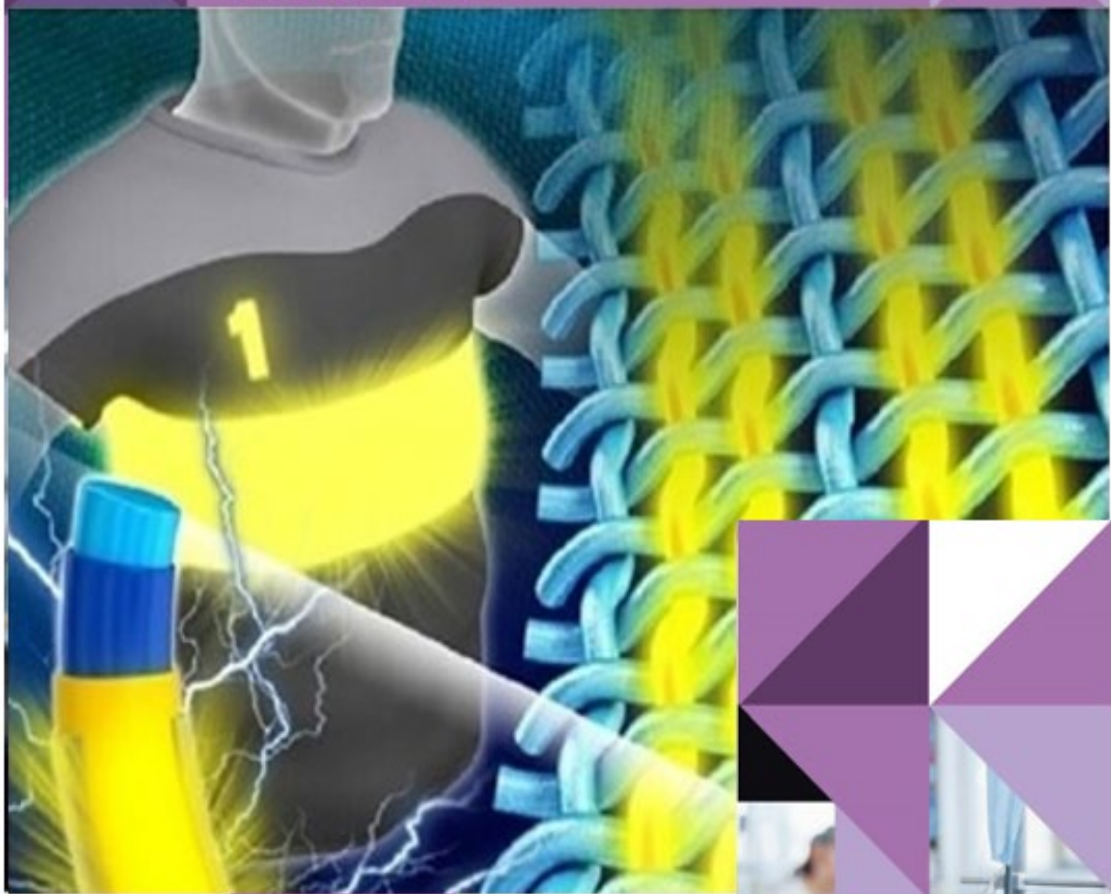


# TEXTILE SCIENCE & APPAREL TECHNOLOGY



 **DUT**  
DURBAN UNIVERSITY OF TECHNOLOGY  
BYVOES TEGEHEKIM TILZONKHEPHESE

 **FACULTY OF  
APPLIED  
SCIENCES**

# 20 HAND 24 BOOK

**ENVISION2030** transparency • honesty • integrity • respect • accountability  
fairness • professionalism • commitment • compassion • excellence

CREATIVE. DISTINCTIVE. IMPACTFUL.

# **HANDBOOK FOR 2024**

## **FACULTY OF APPLIED SCIENCES**

### **DEPARTMENT of TEXTILE SCIENCE AND APPAREL TECHNOLOGY**

**The above department offers two programmes**

**CLOTHING MANAGEMENT and  
TEXTILE TECHNOLOGY**

**This handbook offers information on both programmes**

## **IMPORTANT NOTICES**

- Your registration is in accordance with all current rules of the Institution. If, for whatever reason, you do not register consecutively for every year/semester of your programme, your existing registration contract with the Institution will cease. Your re-registration anytime thereafter will be at the discretion of the institution and, if permitted, will be in accordance with the rules applicable at that time.
- The rules in this departmental handbook must be read in conjunction with the General Rules (G Rules) contained in the DUT General Handbook for Students as well as the relevant Study Guides.
- With respect to an appeal, your attention is specifically drawn to Rules G1(8) and (9), and to the process of dealing with students' issues.

## **STRATEGIC DIRECTION (2020-2025)**

### **FACULTY OF APPLIED SCIENCES**

**[Educate. Engage. Innovate.]**

#### **VISION**

Leading innovation through science and technology

#### **MISSION STATEMENT**

- Educate students
- Generate new scientific knowledge
- Engage communities

#### **VALUES**

1. **Accountability:** We take ownership of all activities, resources and tasks required of us. We deliver on our promises and responsibilities.
2. **Integrity:** We adhere to moral standards and principles. We are transparent and consistent in all our actions, and lead by example.
3. **Dedication:** We are committed to achieving our goals and expectations.
4. **Professionalism:** We operate within clear boundaries with respect to our code of conduct.
5. **People Oriented:** We are committed to sustaining the morale and holistic development of staff and student. We value diversity in all forms.

## **DEPARTMENT OF TEXTILE SCIENCE AND APPAREL TECHNOLOGY**

#### **VISION**

Leading Textile Science and Apparel Technology Scholarship for Global Competitiveness.

#### **MISSION STATEMENT**

To educate and produce professional and well-trained graduates in Textile Science and Apparel Technology, through:

1. Quality Teaching and Learning
2. Research, Engagement and Partnerships, and
3. Entrepreneurship

#### **VALUES**

Integrity, Commitment, Accountability, Fairness, Professionalism, Compassion

## CONTENTS

	<b>Page</b>
<b>1. DEPARTMENTAL &amp; FACULTY CONTACT DETAILS</b>	<b>1</b>
<b>2. DEPARTMENTAL STAFFING</b>	<b>2</b>
<b>3. QUALIFICATIONS OFFERED BY THE DEPARTMENT</b>	<b>3</b>
<b>A. CLOTHING MANAGEMENT</b>	
<b>4 DIPLOMA: CLOTHING MANAGEMENT (DICLMI)</b>	<b>4</b>
4.1 Programme Structure	4
4.2 Programme Information	5
4.2.1 Academic Integrity	5
4.2.2 Code of Conduct for Students	5
4.2.3 Attendance	5
4.2.4 Work Integrated Learning (WIL)	5
4.2.5 Assessment and Moderation	5
4.2.6 Employment Opportunities	6
4.2.7 Registration Periods	6
4.3 Programme Rules	6
4.3.1 Minimum Admission Requirements	6
4.3.2 Selection Criteria	7
4.3.3 Pass Requirements	7
4.3.4 Exclusion Rules	7
4.3.5 Interruption of Studies	7
4.3.6 Work Integrated Learning Rules	8
4.3.7 Code of Conduct	8
4.3.8 Attendance and Assessment	8
4.3.9 Health and Safety	8
4.3.10 General Education Modules	8
<b>5. NATIONAL DIPLOMA: CLOTHING MANAGEMENT (NDCLM2)</b>	<b>9</b>
5.1 Programme Structure	9
5.2 Programme Information	9
5.2.1 Academic Integrity	9
5.2.2 Code of Conduct for Students	9
5.2.3 Attendance	10
5.2.4 Work Integrated Learning (WIL)	10
5.2.5 Assessment and Moderation	10
5.2.6 Employment Opportunities	10
5.2.7 Registration Periods	10
5.2.8 Modularisation	10
5.3 Programme Rules	11
5.3.1 Minimum Admission Requirements	11
5.3.2 Selection Criteria	12
5.3.3 Pass Requirements	12
5.3.4 Re-registration Rules	12

5.3.5	Exclusion Rules	12
5.3.6	Interruption of Studies	12
5.3.7	Work Integrated Learning Rules	13
5.3.8	Code of Conduct	13
5.3.9	Attendance and Assessment	13
5.3.10	Health and Safety	13
<b>6.</b>	<b>NATIONAL DIPLOMA: CLOTHING MANAGEMENT (EXTENDED CURRICULUM) (NDCTFI)</b>	<b>13</b>
6.1	Programme Structure	14
6.2	Programme Information	14
6.3	Programme Rules	14
6.3.1	Minimum Admission Requirements	14
6.3.2	Selection Criteria	15
6.3.3	Pass Requirements	15
6.3.4	Re-registration Rules	15
6.3.5	Exclusion Rules	15
6.3.6	Interruption of Studies	15
6.3.7	Work Integrated Learning Rules	15
6.3.8	Code of Conduct	15
6.3.9	Attendance and Assessment	15
6.3.10	Health and Safety	15
<b>7.</b>	<b>ADVANCED DIPLOMA: CLOTHING MANAGEMENT (TBA)</b>	<b>15</b>
7.1	Programme Structure	16
7.2	Programme Information	16
7.2.1	Academic Integrity	16
7.2.2	Assessment and Moderation	16
7.2.3	Registration Periods	16
7.3	Programme Rules	16
7.3.1	Minimum Admission Requirements	16
7.3.2	Selection Criteria	17
7.3.3	Pass Requirements	17
7.3.4	Re-registration Rules	17
7.3.5	Duration of Programme Offerings	17
7.3.6	Exclusion Rules	17
7.3.7	Interruption of Studies	17
7.3.8	Attendance and Assessment	17
<b>8.</b>	<b>BACHELOR OF TECHNOLOGY: CLOTHING MANAGEMENT (BTCLMTI)</b>	<b>18</b>
8.1	Programme Structure	18
8.2	Programme Information	18
8.3	Programme Rules	18
8.3.1	Minimum Admission Requirements	18

8.3.2	Selection Criteria	18
8.3.3	Pass Requirements	18
8.3.4	Re-registration Rules	18
8.3.5	Exclusion Rules	18
8.3.6	Interruption of Studies	18
<b>B.</b>	<b>TEXTILE TECHNOLOGY</b>	
<b>9.</b>	<b>DIPLOMA: TEXTILE TECHNOLOGY (DITXTI)</b>	19
9.1	Programme Structure	20
9.2	Programme Information	20
9.2.1	Academic Integrity	20
9.2.2	Assessment and Moderation	21
9.2.2	Registration Periods	21
9.3	Programme Rules	21
9.3.1	Minimum Admission Requirements	21
9.3.2	Selection Criteria	22
9.3.3	Pass Requirements	22
9.3.4	Promotion to a Higher Level	22
9.3.5	Exclusion Rules	22
9.3.6	Interruption of Studies	22
9.3.7	Attendance and Assessment	23
9.3.8	General Education Modules	23
<b>10.</b>	<b>BACHELOR OF APPLIED SCIENCE: TEXTILE SCIENCE (BASTXI)</b>	23
10.1	Programme Structure	24
10.2	Programme Information	25
10.2.1	Academic Integrity	25
10.2.2	Assessment and Moderation	25
10.2.3	Registration Periods	25
10.3	Programme Rules	25
10.3.1	Minimum Admission Requirements	25
10.3.2	Selection Criteria	26
10.3.3	Pass Requirements	26
10.3.4	Promotion to a Higher Level	26
10.3.5	Exclusion Rules	26
10.3.6	Interruption of Studies	26
10.3.7	Attendance and Assessment	26
10.3.8	General Education Modules	27
<b>11.</b>	<b>ADVANCED DIPLOMA IN TEXTILE TECHNOLOGY (ADTXTI)</b>	30
11.1	Programme Structure	30
11.2	Programme Information	30

11.2.1	Academic Integrity ( <i>Programme Information</i> )	31
11.2.2	Assessment and Moderation	31
11.2.2	Registration Periods	31
11.3	Programme Rules	31
11.3.1	Minimum Admission Requirements	32
11.3.2	Selection Criteria	32
11.3.3	Pass Requirements	32
11.3.4	Promotion to a Higher Level	32
11.3.5	Duration of Programme Offerings	32
11.3.6	Exclusion Rules	32
11.3.7	Interruption of Studies	32
11.3.8	Code of Conduct	32
11.3.9	Attendance and Assessment	32
<b>12.</b>	<b>SHORT COURSES</b>	<b>33</b>



## I. DEPARTMENTAL & FACULTY CONTACT DETAILS

All departmental queries to:

Secretary: Ms Reshma Sewpersadh  
Tel No: 031 373 2003  
Facsimile No: 031 373 2876  
Email: reshmas@dut.ac.za  
Location: Steve Biko Campus; S6 Level 4

### All Faculty queries to:

Faculty Officer: Ms G Shackleford  
General Enquiries No: 031 373 2506  
Facsimile No: 031 373 2175  
Email: dutfas@dut.ac.za  
Location: Block S4 Level 3, Steve Biko Campus

Faculty Assistant:  
General Enquiries No: 031 373 2717  
Facsimile No: 031 373 2175  
Email: nonhlanhlan3@dut.ac.za  
Location: Block S4 Level 3, Steve Biko Campus

Executive Dean: Prof S Singh  
Executive Dean's Secretary: Ms N Naidoo  
Telephone No: 031 373 2720  
Facsimile No: 031 373 2724  
Email: dutfas@dut.ac.za  
Location: Between Block S6 and S7, Level 4,  
Steve Biko Campus

## 2. DEPARTMENTAL STAFF

<b>Head of Department</b>	Dr A Fassihi, PhD Textile Science (NMU), M Text: Eng. (MSU)
<b>Senior Lecturer</b>	Mr A Judd, MSc: Textile Tech (UMIST); BSc: Eng. Mech (UND)
<b>Lecturers</b>	Ms K Williamson, MAA : Fashion (DUT)  Ms S Harilal, MSc: Textile Science (NMU), BTech: Textile Tech (DUT)  Mr A Mfuywa, MSc: Textile Eng. (University of Liberec); N Dip: Text Tech (DUT)  Miss S Jack: MA Design (Fashion) (UJ) BTech: Clothing Management (DUT)  Ms NN Biyase MTech: Marketing & Retail Management (DUT), BTech Clothing Management
<b>Technician</b>	Ms P Govender, BTech: Clothing Management (DUT), N Dip: Org & WS (MLS)
<b>Technical Assistants</b>	Ms. D Hlengwa: BTech: Textile Tech (DUT); N Dip: Textile Tech (DUT) Mr. LE Ntuzela: BTech: Textile Tech (DUT); N Dip: Textile Tech (DUT)  Mr NV Mpungose; BTech: Clothing Management (DUT); N Dip: Clothing Management (DUT)
<b>Secretary</b>	Ms R Sewpersadh, BTech: Management (DUT)

### 3. QUALIFICATIONS OFFERED BY THE DEPARTMENT

Programmes are offered in this Department which will, upon successful completion, lead to the award of the following qualifications:

- Diploma
- National Diploma (ND)
- Bachelor of Science (BSc)
- Advanced Diploma (AD)

Qualification	Qualification Code	Important dates	SAQA NLRD ID
<b>A. CLOTHING MANAGEMENT</b>			
Diploma: Clothing Management	DICLM1	Commencement Jan 2020	105108
ND: Clothing Management	NDCLM2	TBA	72218
ND: Clothing Management (ECP)	NDCTFI	Commencement Jan 2016	72218
Advanced Diploma: Clothing Management	TBA	TBA	TBA
<b>B. TEXTILE TECHNOLOGY</b>			
Dip: Textile Technology	DITXTI	1st offered Jan 2017	98918
Dip: Textile Technology (ECP)	DITXFI	1st offered Jan 2017	98918
Bachelor of Applied Science: Textile Science	BASTXI	First offering in Jan 2020	97809
Advanced Diploma in Textile Technology	ADTXTI	First offering in Jan 2020	111315

## A. CLOTHING MANAGEMENT

### 4. DIPLOMA: CLOTHING MANAGEMENT (DICLMI)

#### Purpose of Qualification

The qualification in Clothing Management is designed to prepare individuals for a wide range of specialist career opportunities in the apparel and related industries, retail sector and the informal sector. This qualification develops students' knowledge and skills relating to the technology of sewn products. This includes design development and production through to sales, as well as the management and business skills required for a career in the apparel value chain.

#### 4.1 Programme Structure (3 Year)

Code	Module Offering	Study level	Compulsory/ Elective	Assessment Method	SAQA Credits	NQF Level	Prerequisite Modules
PRTE101	Product Technology 1A	1a	C	CA	12	5	
TEXT101	Textiles 1	1a	C	CA	8	5	
PATT101	Patternmaking 1A	1a	C	CA	8	5	
BUA101	Business Management 1A	1a	C	CA	8	5	
CSTN101	Cornerstone 101 (IGE)	1a	C	CA	12	5	
ASWL101	Applied Science and Wellness (FGE)	1a	E	CA	12	5	
PRTE102	Product Technology 1B	1b	C	CA	16	5	Product Technology 1A; Textile 1A
PATT102	Patternmaking 1B	1b	C	CA	12	5	Patternmaking 1A
OPMA101	Operations Management 1	21b	C	CA	12	5	
BUA102	Business Management 1B	21b	C	CA	12	5	
ICTL101	Information & Communication Technology Literacy & Skills (IGE)	21b	E	CA	8	5	
PRTE201	Product Technology 2A	1	C	CA	16	6	Product Technology 1B, Patternmaking 1B
TEXT201	Textiles 2A	1	C	CA	8	6	Textiles 1
OPMA201	Operations Management 2A	1	C	CA	16	6	Operations Management 1
BUA201	Business Management 2	1	C	CA	8	6	
ASSD101	Applied Science For Sustainable Development	1	C	CA	12	6	
PRTE202	Product Technology 2B	2	C	CA	12	6	
TEXT202	Textiles 2B	2	C	CA	12	6	
PATT201	Patternmaking 2	2	C	CA	8	6	
OPMA202	Operations Management 2B	2	C	CA	20	6	
ITCH101	Introduction to Technopreneurship (IGE):	2	E	CA	8	5	

PRTE301#	Product Technology 3A	I	C	CA	16	6	Product Technology 2B
OPMA301#	Operations Management 3A	I	C	CA	8	6	Operations Management 2B
BUA301#	Business Management 3A	I	C	CA	8	6	
RESY301#	Retail Systems	I	C	CA	16	6	
RASS101 ASCE101	Choice of 1 of the following electives (FGE): • Role of Applied Science in Society • Community Development & Engagement	I	E	CA	12	6	
PRTE302#	Product Technology 3B	2	C	CA	16	6	
PRTP301#	Product Technology Project	2	C	CA	16	6	
OPMA302#	Operations Management 3B	2	C	CA	8	6	
BUA301#	Business Management 3B	2	C	CA	12	6	
TENE101 GENV101	Choice of 1 of the following electives (IGE): • The Entrepreneurial Edge • The Global Environment	2	E	CA	8	6	

KEY:

\* CA = Continuous Assessment # These modules are final level modules. FGE = Faculty General Education Module, IGE = Institutional General Education Module Study level 1a = Year 1 semester 1 and 1b = Year 1 semester 2

## 4.2. PROGRAMME INFORMATION

This information must be read in conjunction with the programme rules that follow.

### 4.2.1 Academic Integrity

Refer to the DUT General Rules pertaining to academic integrity G13(1)(o) – covering falsification of academic records, plagiarism and cheating. These will be enforced wherever necessary to safeguard the worthiness of our qualifications, and the integrity of the Faculty of Applied Sciences at DUT.

### 4.2.2 Code of Conduct for Students

A professional code of conduct pertaining to behaviour, appearance, personal hygiene and dress shall apply to all students registered with the Faculty of Applied Sciences, at all times. Refer to Programme Rule 4.3.8 below.

### 4.2.3 Attendance

Students are expected to attend all planned academic activities as these are designed to provide optimal support for the required competency. Students are expected to be punctual for all academic activities. Penalties may be applied for late or poor attendance.

### 4.2.4 Work Integrated Learning (WIL)

There is no formal WIL placement. Industry visits and industry orientated projects are incorporated into the programme. Students are encouraged and assisted where possible to seek and find work experience in apparel manufacturing environments during vacation periods.

### 4.2.5 Assessment and Moderation

Students are expected to work steadily through the period of registration in order to achieve the highest results possible.

- All modules in this programme are assessed using 100% coursework. This is called continuous assessment and as such has no final examination/s nor supplementary examination/s opportunities. Opportunities for reassessment are provided for students who fail assessments. These are stipulated in the relevant study guides.

- Assessment information is listed under each module at the back of this handbook.
- Assessments could include a variety of testing methods including, but not limited to, written tests, oral tests, theoretical and/or practical assessments, group work and assignments.
- Assignments must be handed personally to the lecturer who will record their receipt. Late submission may be penalised.
- Moderation follows the DUT Assessment Policy stipulations.

Refer to Programme Rule 4.3.9 below.

#### 4.2.6 Employment Opportunities

There are job opportunities in the apparel and other related industries for graduates in management, product development, production, work study, planning, quality, garment technology and other areas. Employment in South Africa is available in four main industrial areas - formal manufacturers (established apparel manufacturers), informal sector (small to micro enterprises and entrepreneurs), retail (centralized buying and store management), and allied industries (footwear, training, selling equipment and computers). Opportunities also exist for self-employment. Graduates can pursue further qualifications in management, entrepreneurship, retail, quality or education.

#### 4.2.7 Registration

Single registration will occur in January with all subjects for the year added.

### 4.3 PROGRAMME RULES

#### 4.3.1 Minimum Admission Requirements

In addition to DUT Rule G7, the following minimum entrance requirements and the selection criteria outlined in Rule 4.3.2 will apply for applicants with reference to:-

##### 4.3.1.1 Academic Achievement

In line with the above, the applicants' school leaving academic achievement must comply with one of the following certificates, including the subjects at the stated minimum ratings as outlined in the table below:

- (i) A National Senior Certificate (NSC) with endorsement for a diploma/degree:
- (ii) A Senior Certificate (SC):
- (iii) A National Certificate Vocational (NCV) Level 4 with statutory requirements for a diploma:

Compulsory Subjects	NSC	SC		NCV
	Rating	HG	SG	
English	3	E	C	50%
3 Additional recognised 20 credit subjects (maximum of one additional language)	3	E	C	

##### 4.3.1.2 Admission Requirements based on Work Experience, Age and Maturity; and Recognition of Prior Learning

The DUT Rules G7(3), and G7(8) respectively, will apply.

##### 4.3.1.3 Admission of International Applicants

The DUT's Admissions Policy for International Students and DUT Rules G4 and G7(5) will apply.

International applicants must meet the equivalent of programme minimum entrance requirements as stated above.

#### **4.3.1.4 Admission of Applicants from other Institutions**

In addition to the relevant DUT Rules a transferring applicant will only be accepted if there are places available and the student has met the applicable entrance requirements of the university.

#### **4.3.2 Selection Criteria**

In addition to the Minimum Admission Requirements (Rule 4.3.1), the following selection process will determine acceptance into the programme:

- All applicants must apply through the Central Applications Office (CAO).
- Initial shortlisting for selection is based on the applicant's academic performance in Grade 12 (Grade 11 or Grade 12 trial marks will be used for current matriculants).
- Applicants who meet the above criteria will be:
  - a) invited to undergo placement testing and will be invited to attend an interview
  - b) ranked based on performance according to the table below:-

Assessment	Weighting
Academic Achievement - Average percentage of all relevant subjects	40%
Placement Test	40%
Interview	20%

- Selection will be based on the ranking of applicants who meet the minimum requirements as well as available places (refer to DUT Rule G5).

Provisional acceptance is given to selected applicants awaiting National Senior Certificate (NSC) or National Certificate (Vocational) (NCV) results. If the final results do not meet the minimum entrance requirements, this provisional acceptance will be withdrawn.

#### **4.3.3 Pass Requirements**

The DUT Rules G12, G14 and G15 apply.

#### **4.3.4 Exclusion Rules**

In addition to DUT Rule G17, a student in study period 1 who fails 50% or more of the modules with an average of less than 40% in each of the failed modules is not permitted to reregister in this programme. Deregistration from any modules is subject to the provision of DUT Rule G6.

#### **4.3.5 Interruption of Studies**

Should a student interrupt their studies by more than three (3) years, the student will need to apply to the department for permission to reregister and will need to prove currency of appropriate knowledge prior to being given permission to continue with registration.

#### **4.3.6 Work Integrated Learning Rules**

This programme has no Work Integrated Learning component. Industry visits and industry oriented projects are incorporated in the programme.

### **4.3.7 Code of Conduct**

In addition to the Student Code of Conduct in the DUT General Handbook for Students, and the relevant requirements as stated in the appropriate Study Guides, the following rules apply:

#### **4.3.7.1 Dress Code and Conduct of Students**

Strict adherence to the required dress code and good conduct is required from students. Adherence to related instructions issued by academic or technical staff, is required due to the need to ensure effective and safe practice in the DUT laboratories or on industry visits. Misconduct or disregard for instructions will result in disciplinary measures.

### **4.3.8 Attendance and Assessment**

**4.3.8.1** A student who, for any valid reason, is absent from planned academic activity must provide written proof of the reason for the absence to the lecturer concerned, within five (5) working days of returning to the institution in order to be considered for a special assessment.

**4.3.8.2** The DUT Rule G13(3)(a) which refers to special examinations also refers to special assessments set within departments for students who have missed coursework assessments. In these cases, the department will determine the validity of the student's reason for not taking the assessment, and the nature of the special assessment.

### **4.3.9 Health and Safety**

Students must adhere to all Health and Safety regulations both while at DUT and during industry visits. Failure to do so will be treated as a breach of discipline. Refer to the appropriate Health and Safety policies.

### **4.3.10 General Education Modules**

Students must comply with the university's General Education requirement. This includes the following standalone General Education modules which comprise of:

- 1 Compulsory DUT Cornerstone 101 module
- 1 Compulsory and 2 Elective Faculty General Education modules
- 3 Elective Institutional General Education modules

Students will select electives modules as indicated in Table 4.1 Programme Structure.



## 5. NATIONAL DIPLOMA: CLOTHING MANAGEMENT (NDCLM2)

### Purpose of Qualification

The qualification in Clothing Management is designed to prepare individuals for a wide range of specialist career opportunities in the apparel and related industries, retail sector and the informal sector. This qualification develops students' knowledge and skills relating to the technology of sewn products. This includes design development and production through to sales, as well as the management and business skills required for a career in the apparel industry.

### 5.1 PROGRAMME STRUCTURE (3 YEAR)

Code	Subjects Offering	Level of Study	Assessment Method	NATED Credits	Prerequisite Subjects
BSTD101	Business Studies I	1	CA	0.120	
MGTC101	Management I	1	CA	0.150	
PRDT111	Production Technology I Module 1	1a	CA	0.215	
PRDO111	Production Organisation I Module 1	1a	CA	0.150	
PRDT121	Production Technology I Module 2	1b	CA	0.215	Production Technology I Mod 1*
PRDO121	Production Organisation I Module 2	1b	CA	0.150	
BSTD213	Business Studies II Module 1	2a	CA	0.060	Business Studies I
MGTC211	Management II Module 1	2a	CA	0.075	Management I
PRDO211	Production Organisation II Module 1	2a	CA	0.150	Production Organisation I
PRDT211	Production Technology II Module 1	2a	CA	0.215	Production Technology I
BSTD223	Business Studies II Module 2	2b	CA	0.060	Business Studies I
MGTC221	Management II Module 2	2b	CA	0.075	Management I
PRDO221	Production Organisation II Module 2	2b	CA	0.150	Production Organisation I
PRDT221	Production Technology II Module 2	2b	CA	0.215	Production Technology I
BSTD301#	Business Studies III	3	CA	0.150	Business Studies II
MGTC301#	Management III	3	CA	0.150	Management II
PRDO301#	Production Organisation III	3	CA	0.150	Production Organisation II
PRDT311#	Production Technology III Module 1	3a	CA	0.125	Production Technology II
PRDT321#	Production Technology III Module 2	3b	CA	0.125	Production Technology II
EXCLI01	WIL	3	CA	0.300	

**KEY:** Assessment: CA = Continuous Assessment is no Final examination for these subjects/modules.

Numbers 1 to 3 indicates the year of study, "a"= Semester 1, "b"=Semester 2 (eg 2b=Second year, Semester 2)

\* Approved by Senate wef 2015/08

# These subjects are final level subjects.

A Pre-Req (prerequisite) means this subject must be passed prior to registration for the subsequent subject/module.

### 5.2. PROGRAMME INFORMATION

This information must be read in conjunction with the programme rules that follow.

#### 5.2.1. Academic Integrity

Refer to the DUT General Rules pertaining to academic integrity G13(1)(o) - covering falsification of academic records, plagiarism and cheating. These will be enforced wherever necessary to safeguard the worthiness of our qualifications, and the integrity of the Faculty of Applied Sciences at DUT.

#### 5.2.2. Code of Conduct for Students

A professional code of conduct pertaining to behaviour, appearance, personal hygiene and dress shall apply to all students registered with the Faculty of Applied Sciences, at all times. Refer to Programme Rule 5.3.8 below.

### **5.2.3. Attendance**

Students are expected to achieve 100% attendance for all planned academic activities as these are designed to provide optimal support for the required competency. Students are expected to be punctual for all academic activities. Attendance at all visits to industry is compulsory. Attendance during Experiential Learning placements is determined by the employment requirements of the employer. Penalties may be invoked for late attendance. Refer to Programme Rule 5.3.9 below.

### **5.2.4. Work Integrated Learning (WIL)**

The WIL component of this programme is compulsory. The student is required to secure and undertake experiential training in the workplace. Placements do not need to be completed in a single period - it is recommended that WIL is split across the total 3 years of study. Designing a WIL schedule should be done in consultation with the programme WIL coordinator.

The department undertakes to assist the student to obtain suitable placement by providing the student with contact details and employment seeking skills. It is then the responsibility of the student to find a placement to demonstrate their work seeking ability. The department will assist further in extreme cases.

Refer to Programme Rule 5.3.7 below.

### **5.2.5. Assessment and Moderation**

Students are expected to work steadily through the period of registration in order to achieve the highest results possible.

- All modules/subjects in this programme are assessed using 100% coursework. These are called continuous assessment subjects and as such have no final examination/s nor supplementary examination/s opportunities. Opportunities for reassessment are provided for students who fail written assessments. These are stipulated in the relevant study guides.
- Assessment details are listed under each subject at the back of this handbook.
- Assessments could include a variety of testing methods including, but not limited to, written tests, oral presentations, theoretical and/or practical assessments, group work and assignments.

**5.2.5.1.** Assignments must be handed personally to the lecturer who will record their receipt. Late submission will be penalised.

**5.2.5.2.** Moderation follows the DUT Assessment Policy stipulations.

Refer to Programme Rule 5.3.9 below.

### **5.2.6. Employment Opportunities**

There are job opportunities in the apparel and other related industries for graduates in management, product development, production, work study, planning, quality, garment technology and other areas. Employment in South Africa is available in four main industrial areas - formal manufacturers (established apparel manufacturers), informal sector (small to micro enterprises and entrepreneurs), retail (centralized buying and store management), and allied industries (footwear, training, selling equipment and computers). Opportunities also exist for self-employment. Graduates can pursue further qualifications in management, entrepreneurship, retail, quality or education.

### **5.2.7. Registration Periods**

Annual registration will occur in January with further modules added in July where appropriate. Some modules (full-time or part-time) may be offered in both semesters where resources permit.

### **5.2.8. Modules in Clothing Management**

Certain subjects for the Clothing Management programmes have been split into two modules, which are offered in successive semesters. Module details are included in the

relevant subject study guides. All modules are split vertically, i.e., half of the learning material for all components of the whole syllabus is covered in each module. The learning in the second module is generally dependent on the learning in the first module, although the first module is not a prerequisite of the second, with the exception of Production Technology I Module 1 which is a prerequisite for Production Technology I Module 2 (Approved by Senate 2015/08).

### 5.3. PROGRAMME RULES

#### 5.3.1. Minimum Admission Requirements

In addition to DUT Rule G7, the following minimum entrance requirements and the selection criteria outlined in 4.3.2 apply for applicants with reference to:-

##### 5.3.1.1 Academic Achievement

In line with the above, applicants' school leaving academic achievement must comply with one of the following:-

- i) a National Senior Certificate (NSC) with endorsement for diploma/degree entry with the following subjects at the stated minimum ratings (Approved by Senate wef 2015/08):

Compulsory Subjects	NSC Rating
English	3
PLUS 3 additional recognised 20 credit subjects	3

- ii) a Senior Certificate is matriculation exemption with the following subjects at the stated minimum ratings

Compulsory Subjects	HG	SG
English	E	D
3 further subjects (which may include no more than one language)	E	D

- iii) a National Certificate (Vocational) Level 4 with statutory requirements for a diploma entrance and the following subjects at the stated minimum ratings (Approved by Senate wef 2013/08):

Compulsory Subjects	Minimum
English	50%

##### 5.3.1.2 Admission Requirements based on Work Experience, Age and Maturity; and Recognition of Prior Learning

The DUT Rules G7(3), and G7(8) respectively, will apply.

(Approved by Senate Rules Comm wef 2014/10)

##### 5.3.1.3 Admission of International Students

The DUT's Admissions Policy for International Students and DUT Rules G4 and G7(5) will apply.

International students must meet the equivalent of programme minimum entrance requirements as stated above.

(Approved by Senate Rules Comm wef 2014/10)

##### 5.3.1.4 Admission of Students from other Institutions

In addition to the relevant DUT Rules a transferring student will only be accepted if there are places available and the student has met the applicable entrance requirements of the university.

*(Approved by Senate Rules Comm wef 2014/10)*

### **5.3.2 Selection Criteria**

In addition to the Minimum Admission Requirements (Rule 4.3.1), the following selection process will determine placement in the programme:

**5.3.2.1** All applicants must apply through the Central Applications Office (CAO).

**5.3.2.1.1** Initial shortlisting for selection is based on the applicant's academic performance in Grade 12 (Grade 11 or Grade 12 trial marks will be used for current matriculants).

**5.3.2.2** Applicants who meet the above criteria will be:

- c) invited to undergo placement testing and will be invited to attend an interview
- d) ranked based on performance according to the table below:-

Assessment	Weighting
Academic Achievement	30%
• Average percentage of all relevant subjects	
Placement Test	30%
Interview	40%

**5.3.2.3** Provisional acceptance is given to selected applicants awaiting National Senior Certificate\* (NSC) results. If the final Grade 12 NSC\* results do not meet the minimum entrance requirements, this provisional acceptance will be withdrawn.

**5.3.2.4** Final selection for placement will be based on results of the above ranking process, as well as available places (refer to DUT Rule G5)

*\*(or SC / NC(V)) (Approved by Senate Rules Comm wef 2014/10)*

### **5.3.3 Pass Requirements**

The DUT Rules G12, G14 and G15 apply.

*(Approved by Senate Rules Comm wef 2014/10)*

### **5.3.4 Re-registration Rules**

In addition to the DUT Rule G16, and all prerequisite subjects as identified in the Programme Structure (4.1), the following programme rule applies:-

**5.3.4.1** A self-study option is available to students repeating a subject or module whereby the student may work on their own to resubmit work for assessment, provided:

- They have previously satisfactorily attended the full-time subject.
- Only one major module or subject may be carried by this option during a semester if taken in addition to a full-time load.
- This option infers that no formal lectures are attended but tutorials will be available.
- There is no change in the tuition fee.

### **5.3.5 Exclusion Rules**

In addition to DUT Rule G17, a first year student who fails three or more subjects with a final result of less than 40% in each subject is not permitted to reregister in this programme. Deregistration from any subjects is subject to the provision of DUT Rule G6. *(Approved by Senate Rules Comm wef 2014/10)*

### **5.3.6 Interruption of Studies**

In accordance with DUT Rule G21A(b), the minimum duration for this programme will be 3 years of registered study and the maximum duration will be 5 years of

registered study, including any periods of WIL. Should a student interrupt their studies by more than three (3) years, the student will need to apply to the department for permission to reregister and will need to prove currency of appropriate knowledge prior to being given permission to continue with registration.

*(Approved by Senate Rules Comm wef 2014/10)*

### **5.3.7 Work Integrated Learning Rules**

In addition to Rule G28 the following will apply:

**5.3.7.1** Work Integrated Learning is a formal subject, although registered separately. WIL credits must be accumulated through meeting the required outcomes in order to qualify for certification.

**5.3.7.2** Students must refer to the Study Guide for Experiential Learning (EXCLI01), which provides the outcomes required for the period of experiential learning.

**5.3.7.3** The student must register an experiential learning placement with the department before commencement.

*(Approved by Senate wef 2015/08)*

### **5.3.8 Code of Conduct**

In addition to the Student Code of Conduct in the DUT General Handbook for Students, and the relevant requirements as stated in the appropriate Study Guides, the following rules apply:

#### **5.3.8.1 Conduct of Students in Practical Facilities**

Strict adherence to instructions issued by technical, supervisory or academic staff is required due to the need to ensure effective and safe practice in these facilities. Misconduct or disregard for instructions will be referred to the relevant disciplinary procedure. *(Approved by Senate Rules Comm wef 2014/10)*

#### **5.3.8.2 Uniforms**

Students must adhere to instructions issued by technical, supervisory or academic staff regarding the specific dress code required during practicals. Non-compliance will result in the student being denied access to the venue.

*(Approved by Senate Rules Comm wef 2014/10)*

### **5.3.9 Attendance and Assessment**

**5.3.9.1** A student who, for any valid reason (Refer to Programme Rule 4.3.9.2 below), is absent from a particular practical or test, must provide written proof of the reason for the absence to the lecturer concerned, within five (5) working days of returning to the institution in order to be considered for a special assessment. *(Approved by Senate Rules Comm wef 2014/10)*

**5.3.9.2** The DUT Rule G13 (3) (a) which refers to special examinations also refers to special assessments set within departments for students who have missed coursework assessments. In these cases the department will determine the validity of the student's reason for not taking the assessment, and the nature of the special assessment. *(Approved by Senate Rules Comm wef 2014/10)*

### **5.3.10 Health and Safety**

Students must adhere to all Health and Safety regulations both while at DUT and in WIL placements. Failure to do so will be treated as a breach of discipline. Refer to the appropriate Health and Safety policies.

*(Approved by Senate Rules Comm wef 2014/10)*

## 6. NATIONAL DIPLOMA: CLOTHING MANAGEMENT (ECP) (NDCTFI)

The ND: Clothing Management (ECP) was introduced in 2016.

### Purpose of Qualification

The qualification in Clothing Management is designed to prepare individuals for a wide range of specialist career opportunities in the apparel and related industries, retail sector and the informal sector. This qualification develops students' knowledge and skills relating to the technology of sewn products including design development, production and through to sales, as well as the management and business skills required for a career in the apparel industry. This qualification is offered through a three year programme (refer to item 4 above), or through an augmented curriculum - offered over a minimum of four years of study - which is devised to enhance student development and to improve the student's chances of successful completion.

### I.1 PROGRAMME STRUCTURE (4 YEAR)

Code	Subjects	Level of Study	Assessment	NATED Credits	Pre-requisite Subjects
MGTC101	Management I	1	CA	0.050	
PDOR111	Production Organisation I Module 1	1	CA	0.100	
PDNT111	Production Technology I Module 1	1	CA	0.100	
INCM101	Introduction to Clothing Management I Module 1	1	CA	0.250	
BSTD101	Business Studies I	2	CA	0.050	
PDOR121	Production Organisation I Module 2	2	CA	0.100	
PDNT121	Production Technology I Module 2	2	CA	0.100	Production Technology I Module 1
INCM201	Introduction to Clothing Management I Module 2	2	CA	0.250	
BSTD213	Business Studies II Module 1	3a	CA	0.060	Business Studies I
MGTC211	Management II Module 1	3a	CA	0.075	Management I
PRDO211	Production Organisation II Module 1	3a	CA	0.150	Production Organisation I
PRDT211	Production Technology II Module 1	3a	CA	0.215	Production Technology I
BSTD223	Business Studies II Module 2	3b	CA	0.060	Business Studies I
MGTC221	Management II Module 2	3b	CA	0.075	Management I
PRDO221	Production Organisation II Module 2	3b	CA	0.150	Production Organisation I
PRDT221	Production Technology II Module 2	3b	CA	0.215	Production Technology I
BSTD301#	Business Studies III	4	CA	0.150	Business Studies II
MGTC301#	Management III	4	CA	0.150	Management II
PRDO301#	Production Organisation III	4	CA	0.150	Production Organisation II
PRDT311#	Production Technology III Module 1	4a	CA	0.125	Production Technology II
PRDT321#	Production Technology III Module 2	4b	CA	0.125	Production Technology II
EXCL101	WIL	4	CA	0.300	

**KEY:** Assessment: CA = Continuous Assessment is no Final examination for these subjects/modules. Numbers 1 to 4 indicates the year of study, "a"= Semester 1, "b"=Semester 2 (eg 2b=Second year, Semester 2)

# These subjects are final level subjects.

A Pre-Req (prerequisite) means this subject must be passed prior to registration for the subsequent subject/module.

## **I.2 PROGRAMME INFORMATION**

Refer to 4.2 Programme Information under the ND: Clothing Management.

## **I.3 PROGRAMME RULES**

Refer to 4.3 Programme Rules under the ND: Clothing Management and the following rules which apply specifically to ND: Clothing Management (ECP).

### **I.3.1 Minimum Admission Requirements**

Refer to Rule 4.3.1 which is applicable to both the ND and ND(ECP).

### **I.3.2 Selection Criteria**

Refer to Rule 4.3.2 which is applicable to both the ND and ND(ECP).

In addition to the above, on the basis of the selection process, successful applicants for study towards the National Diploma will be accepted into either the three (3) year, or four (4) year (Extended Curriculum) programme of study.

### **I.3.3 Pass Requirements**

Refer to Rule 4.3.3 which is applicable to both the ND and ND(ECP).

### **I.3.4 Reregistration Rules in the Extended Curriculum Programme**

Refer to Rule 4.3.4 which is applicable to both the ND and ND(ECP).

### **I.3.5 Exclusion Rules**

Refer to Rule 4.3.5 which is applicable to both the ND and ND(ECP).

### **I.3.6 Interruption of Studies**

In accordance with Rule G21A(b), the minimum duration for this programme will be 4 years of registered study and the maximum duration will be 5 years of registered study, including any periods of WIL. Should a student interrupt their studies by more than three (3) years, the student will need to apply to the department for permission to reregister and will need to prove currency of appropriate knowledge prior to being given permission to continue with registration. *(Approved by Senate Rules Comm wef 2014/10)*

### **I.3.7 Work Integrated Learning Rules**

Refer to Rule 4.3.5 which is applicable to both the ND and ND(ECP).

### **I.3.8 Code of Conduct**

Refer to Rule 4.3.8 which is applicable to both the ND and ND(ECP).

### **I.3.9 Attendance and Assessment**

Refer to Rule 4.3.9 which is applicable to both the ND and ND(ECP).

### **I.3.10 Health and Safety**

Refer to Rule 4.3.10 which is applicable to both the ND and ND(ECP).

## 7. **ADVANCED DIPLOMA IN APPAREL TECHNOLOGY (TBA)** (SAQA Reg No: TBA, SAQA Credit Value 120 credits, NQF Level 7)

### **Purpose of Qualification**

The Advanced Diploma in Apparel Technology offers an intensive, focused and applied programme which meets the employment requirements of specified niches in the apparel value chain.

It is particularly suitable for continuing professional development and is additionally designed to prepare students for postgraduate study through deepening their knowledge and understanding of theories and practices in apparel technology, and the development of their ability to undertake more complex problems and tasks through the selection and use of appropriate methods and techniques.

### **7.1 AD: Apparel Technology Programme Structure (1 Year)**

Code	Subjects	Core/ Elective	Level of Study	NQF Level	Assess Method	SAQA Credits	Prerequisites
APTE401	Apparel Technology IV	C	1a	7	CA	24	
AATX401	Applied Apparel Textiles IVa	C	1a	7	CA	12	
EIAI401	Entrepreneurship and Innovation in the Apparel Industry	C	1a	7	CA	20	
AEFA401	Apparel Education Facilitation and Assessment	C	1a	7	CA	8	
APTP401	Apparel Technology Project IV	C	1b	7	CA	20	
AATX402	Applied Apparel Textiles IVb	C	1b	7	CA	12	
ESBM401	Entrepreneurship and Small Business Management	C	1b	7	CA	20	
FPAI401	Financial Practice for the Apparel Industry	C	1b	7	CA	7	

KEY: All subjects/modules are compulsory unless indicated with an \*\* which means it is an Elective option.

Assessment: Ex = examinable; CA = Continuous Assessment (No Final Exam)

Level of study, "a"= Semester 1, "b"=Semester 2

A Pre-Req (prerequisite) means this subject must be passed prior to registration for the subsequent subject/module.

## **7.2 Programme Information**

### **7.2.1 Academic Integrity (Programme Information)**

Refer to the DUT General Rules pertaining to academic integrity DUT Rule G13(1)(o) - covering falsification of academic records, plagiarism and cheating. These will be enforced wherever necessary to safeguard the worthiness of our qualifications, and the integrity of the Faculty of Applied Sciences at DUT.

### **7.2.2 Assessment and Moderation (Programme Information)**

- Assignments must be submitted by due date indicated in the relevant study guide. Late submission will be penalised.
- In the case of a continuous assessment subject (a subject which has no final examination/s or supplementary examination/s) opportunities for reassessment are provided for students who fail assessments. These are stipulated in the relevant study guide.



- Moderation follows the DUT Assessment Policy stipulations. Refer to Programme Rule below.

### **7.2.3 Registration Periods (Programme Information)**

- Applicants are required to apply directly to the Department of Clothing and Textile Studies. The closing date for applications is 30th September each year.
- First time registration will occur in January and for returning students January and July. Not all subjects or modules will be offered in both semesters.

## **7.3 Programme Rules**

### **7.3.1 Minimum Admission Requirements (Programme Rules)**

In addition to DUT Rule G7, the following minimum admission requirements apply for applicants with reference to:-

#### **7.3.1.1 Academic Achievement (Programme Rules)**

The minimum admission requirements for this programme are:

- National Diploma in Clothing Management
- Diploma Clothing Management
- A recognized equivalent Diploma/Degree

#### **7.3.1.2 Admission Requirements based on Work Experience, Age and Maturity; and Recognition of Prior Learning (Programme Rules)**

The DUT Rules G7(3), and G7(8) respectively, will apply.

#### **7.3.1.3 Admission of International Students (Programme Rules)**

The DUT's Admissions Policy for International Students and DUT Rules G4 and G7(5) will apply.

#### **7.3.1.4 Admission of Students from other Institutions (Programme Rules)**

In addition to the relevant DUT Rules a transferring student will only be accepted if there are places available and the student has met the applicable entrance requirements of the University.

### **7.3.2 Selection Criteria (Programme Rules)**

Selection into the qualification is based on the number of available places in the programme.

- Applicants will be ranked on academic performance
- Final selection for placement, will be based on performance in National Diploma Clothing Management, or Clothing Management, or equivalent recognised qualification, and the interview.

### **7.3.3 Pass Requirements (Programme Rules)**

The DUT Rules G12, G14 and G15 apply.

### **7.3.4 Promotion to a Higher Level/ Progression Rules (Previously Reregistration Rules) (Programme Rules)**

The DUT Rule G16 applies.

### **7.3.5 Duration of Programme Offerings**

The DUT Rule G21C(3) applies.

### 7.3.6 Exclusion Rules (**Programme Rules**)

The DUT Rules G17 and G21C(3) shall apply to this qualification.

Deregistration from any modules is subject to the provision of DUT Rule G6.

### 7.3.7 Interruption of Studies (**Programme Rules**)

The DUT Rule G6B pertaining to interruption of studies will apply. Should a student interrupt their studies by more than three (3) years, the student will need to apply to the department for permission to reregister and will need to prove currency of appropriate knowledge prior to being given permission to continue with the registration.

### 7.3.8 Attendance and Assessment (**Programme Rules**)

**7.3.8.1** A student who, for any valid reason (Refer to Programme Rule 7.3.7.2), is absent from a particular practical or test, must provide written proof of the reason for the absence to the lecturer concerned, within five (5) working days of returning to the institution in order to be considered for a special assessment.

**7.3.8.2** The DUT Rule G13(3)(a) which refers to special examinations also refers to special assessments set within departments for students who have missed coursework assessments. In these cases the department will determine the validity of the student's reason for not taking the assessment, and the nature of the special assessment.

## 8. BACHELOR OF TECHNOLOGY DEGREE: CLOTHING MANAGEMENT (BTCLM1)

### 8.1 PROGRAMME STRUCTURE

Code	Subjects	Level of Study	Assessment	NATED Credits
PRDT411	Specialised Production Technology 4 Mod 1	I	CA	0.200
PRDT421	Specialised Production Technology 4 Mod 2	I	CA	0.350
PROD401	Production Organisation 4	I	CA	0.150
MGTC401	Management 4	I	CA	0.150
BSTD401	Business Studies 4	I	CA	0.150

### 8.2 PROGRAMME INFORMATION

This programme can be completed in one year full time or over two years part time. Not all subjects are offered in all years. Subject choice must be guided by the programme coordinator.

### 8.3 PROGRAMME RULES

#### 8.3.1 Minimum Admission Requirements

In addition to Rule G7 and G23A(a)(1), an applicant must have:

**8.3.1.1** a minimum aggregate of 60% across final level subjects - or

**8.3.1.2** relevant post-diploma industrial experience

*(Approved by Senate Rules Comm wef 2014/10)*

### **8.3.2 Selection Criteria**

In addition to the Minimum Admission Requirements (Rule 5.3.1):

**8.3.2.1** Applicants who meet the above criteria will be invited to undergo an interview.

**8.3.2.2** Final selection for placement will be based on performance in the ND: Clothing Management, the interview and available places (refer to DUT Rule G5).

*(Approved by Senate Rules Comm wef 2014/10)*

### **8.3.3 Pass Requirements**

The DUT Rules G12, G14 and G15 apply.

### **8.3.4 Re-registration Rules**

The DUT Rule G16 applies.

### **8.3.5 Exclusion Rules**

The DUT Rules G17 and G23A (a) (4) apply.

### **8.3.6 Interruption of Studies**

In accordance with DUT Rule G23A (a), the minimum duration for this programme will be 1 year of registered study and the maximum duration will be 2 years of registered study. Should a student interrupt their studies by more than three (3) years, the student will need to apply to the department for permission to reregister and will need to prove currency of appropriate knowledge prior to being given permission to continue with registration.

## **B. TEXTILE TECHNOLOGY**

### **9. Diploma in Textile Technology (DITXTI)**

Dip (Textile Technology) (SAQA Reg No: 98918, SAQA Credit Value 360 credits)

#### **Purpose of Qualification**

The three-year qualification in Textile Technology is designed to prepare individuals for a wide range of specialist career opportunities in textile industries such as manufacture of textile fibres, yarns, fabrics, and the colouration and finishing thereof, as well as major fashion retail stores, government sectors and research institutions. This is based on a foundation in mathematics, chemistry and physics.

Students specialise in either the 'wet' or the 'dry' side of the industry. The dry side includes a broad range of manufacturing routes including the cultivation/manufacture of the main fibre types, the principle yarn manufacturing processes, and the knitting, non-woven, and woven fabric manufacturing routes. On the 'wet' side - areas include the chemistry and processing associated with the principle dyeing, printing, and finishing stages of manufacture, as well as colour physics and polymer chemistry. In addition, this qualification includes other important areas such as textile testing, product development, and some management content.

The program is designed to prepare students with a broad range of textile knowledge, to provide entrance into the extremely diverse local textile manufacturing operations. Graduates of the diploma would be able to display technical qualities appropriate to the manufacturing environment and demonstrate environmental responsibilities.

## 9.1 Programme Structure (3 Year)

Code	Subjects	Core/ Elective	Level of Study	NQF Level	Assess Method	SAQA Credits	Prerequisites
CSTN101	DUT Cornerstone 101 (IGE)	C	1a	5	CA	12	
ICTL101	Information and Communication Literacy and Skills (IGE)	C	1a	5	CA	8	
CHSY101	Chemistry 1	C	1a	5	Ex	12	
PYSC101	Physics 1	C	1a	5	Ex	16	
SVTX101	Survey of the Textile Industry 1	C	1a	5	Ex	16	
WVPR101	Weaving Preparation	C	1b	6	Ex	12	
MMAT101	Mathematics 1	C	1b	5	Ex	16	
TXMT101	Textile Materials	C	1b	6	CA	12	
YRNT201	Yarn Technology 2	C	1b	6	Ex	16	Survey of Textile Inds 1
PRDE101	Product Engineering 1	C	2a	6	CA	16	
WVTC201	Weaving Technology 2	C	2a	6	Ex	16	Survey of Textile Inds 1
KNTT101	Knitting Technology	C	2a	6	Ex	12	
CLRT201	Colouration Technology 2	C	2a	6	Ex	16	Survey of Textile Inds 1
ITCH101	Introduction to Technopreneurship (IGE)	E	2b	5	CA	8	
ASWL101	Applied Science and Wellness (FGE)	E	2b	5	CA	12	
ASCE101	Community Engagement and Development (FGE)	C	2b	6	CA	12	
TPRP101	Textile Practice Research Project	C	2b	6	CA	28	Survey of Textile Inds 1
VWKP101	Values in Work Place (IGE)	E	3a	5	CA	8	
RASS101	Role of Applied Science in Society (FGE)	E	3a	6	CA	12	
PDTO101	Production Organization	C	3a	6	CA	8	
PRDE201#	Product Engineering 2	C	3a	6	CA	12	Product Engineering 1
NWVT101#	Non-Woven Technology	C	3a	6	Ex	12	
FNST101#	Finishing Technology	C	3a	6	Ex	12	
IDST101#	Industrial Studies	C	3b	6	CA	12	
TSST101#	Testing and Statistics	C	3b	6	CA	16	
	<b>Either Dry Option</b>	E					
WVTC301#	Weaving Technology 3	C	3b	7	Ex	16	Weaving Technology 2
YRNT301#	Yarn Technology 3	C	3b	7	Ex	12	Yarn Technology 2
	<b>Or Wet Option</b>	E					
CLRT301#	Colouration Technology 3	C	3b	7	Ex	16	Colouration Tech 2
CCLP101#	Chemistry and Colour Physics	C	3b	7	Ex	12	

KEY: All subjects/modules are compulsory unless indicated with an \*\* which means it is an Elective option.

Assessment: Ex = examinable; CA = Continuous Assessment (No Final Exam)

Numbers 1 to 3 indicates the year of study, "a"= Semester 1, "b"=Semester 2 (e.g. 2b=Second year, Semester 2)

# These subjects are final level subjects.

A Pre-Req (prerequisite) means this subject must be passed prior to registration for the subsequent subject/module.

FGE = Faculty General Education Module, IGE = Institutional General Education Module

## 9.2 Programme Information

### 9.2.1 Academic Integrity (Programme Information)

Refer to the DUT General Rules pertaining to academic integrity DUT Rule G13(1)(o) - covering falsification of academic records, plagiarism and cheating. These will be enforced wherever necessary to safeguard the worthiness of our qualifications, and the integrity of the Faculty of Applied Sciences at DUT.

### 9.2.2 Assessment and Moderation (*Programme Information*)

- Assignments must be submitted by due date indicated in the relevant study guide. Late submission will be penalised.
- In the case of a continuous assessment subject (a subject which has no final examination/s or supplementary examination/s) opportunities for reassessment are provided for students who fail assessments. These are stipulated in the relevant study guide.
- Moderation follows the DUT Assessment Policy stipulations. Refer to Programme Rule below.

### 9.2.3 Registration Periods (*Programme Information*)

- All applicants must apply through the Central Applications Office (CAO) by no later than October prior to the year of intended study.
- First time registration will occur in January and for returning students January and July. Not all subjects or modules will be offered in both semesters.

## 9.3 Programme Rules

### 9.3.1 Minimum Admission Requirements (*Programme Rules*)

In addition to DUT Rule G7, the following minimum entrance requirements and the selection criteria outlined in Departmental Rule 7.3.2 apply for applicants with reference to:-

#### 9.3.1.1 Academic Achievement (*Programme Rules*)

In line with the above, applicants' school leaving academic achievement must comply with one of the following:-

- a National Senior Certificate (NSC) with endorsement for diploma/degree entry with the following subjects at the stated minimum ratings
- a Senior Certificate is matriculation exemption with the following subjects at the stated minimum ratings
- a National Certificate (Vocational) Level 4 with statutory requirements for a diploma entrance and the following subjects at the stated minimum ratings

Compulsory Subjects	NSC Rating	Senior Certificate		NCV
		HG	SG	
English	4	E	D	50%
Mathematics	4 or 3*	E	E or D**	60%
Physical Science	3 or 4*	E	E or D**	60%

\* The sum of an applicant's achievement rating for Mathematics + Physical Science must be  $\geq 7$  to be eligible for the three-year Diploma in Textile Technology.

\*\* Either Mathematics or Physical Science should be at HG E (or SG D) to be eligible for the 3-year Diploma in Textile Technology

### **9.3.1.2 Admission Requirements based on Work Experience, Age and Maturity; and Recognition of Prior Learning (*Programme Rules*)**

The DUT Rules G7(3), and G7(8) respectively, will apply.

### **9.3.1.3 Admission of International Students (*Programme Rules*)**

- The DUT's Admissions Policy for International Students and DUT Rules G4 and G7(5) will apply.
- International students must meet the equivalent of programme minimum entrance requirements as stated above.

### **9.3.1.4 Admission of Students from other Institutions (*Programme Rules*)**

In addition to the relevant DUT Rules a transferring student will only be accepted if there are places available and the student has met the applicable entrance requirements of the University.

## **9.3.2 Selection Criteria (*Programme Rules*)**

In addition to the Minimum Admission Requirements, the following process will determine placement in the programme:

- Initial shortlisting for selection is based on the applicant's academic performance in Grade 12 (Grade 11 or Grade 12 trial marks will be used for current matriculants).
- Applicants who meet the above criteria will be invited to undergo placement testing to stream into either the main stream programme or ECP
- Provisional acceptance is given to selected applicants awaiting National Senior Certificate (NSC) results. If the final Grade 12 NSC results do not meet the minimum entrance requirements, this provisional acceptance will be withdrawn.
- Final selection will be based on the ranking of applicants who meet the minimum requirements, as well as available places (refer to DUT Rule G5).

## **9.3.3 Pass Requirements (*Programme Rules*)**

The DUT Rules G12, G14 and G15 apply.

## **9.3.4 Promotion to a Higher Level/ Progression Rules (*Previously Reregistration Rules*) (*Programme Rules*)**

The DUT Rule G16 applies.

## **9.3.5 Exclusion Rules (*Programme Rules*)**

In addition to DUT Rule G17, a first year student who fails 50% plus one of

the modules with a final result of less than 40% in each module is not permitted to reregister in this programme. Deregistration from any modules is subject to the provision of DUT Rule G6A.

### **9.3.6 Interruption of Studies (*Programme Rules*)**

In accordance with DUT Rule G21A(b), the minimum duration for this programme will be 3 years of registered study and the maximum duration will be 5 years of registered study. Should a student interrupt their studies by more than 3 years, the student will need to apply to the department for permission to re-register and will need to prove currency of appropriate knowledge prior to being given permission to continue with registration.

### **9.3.7 Attendance and Assessment (*Programme Rules*)**

**9.3.7.1** A student who, for any valid reason (Refer to Programme Rule 7.3.7.2), is absent from a particular practical or test, must provide written proof of the reason for the absence to the lecturer concerned, within five (5) working days of returning to the institution in order to be considered for a special assessment.

**9.3.7.2** The DUT Rule G13(3)(a) which refers to special examinations also refers to special assessments set within departments for students who have missed coursework assessments. In these cases the department will determine the validity of the student's reason for not taking the assessment, and the nature of the special assessment.

### **9.3.8 General Education Modules (*Programme Rule*)**

Students must comply with the university's General Education requirement. This includes the following standalone General Education modules which comprise of:

- 1 DUT Cornerstone 101 module (compulsory)
- 1 Institutional General Education module (compulsory)
- 2 Institutional General Education modules (elective)
- 1 Faculty General Education module (compulsory)
- 2 Faculty General Education modules (elective)
- (Students will select electives modules as indicated in Table 7.1 Programme Structure)



**10. Bachelor Applied Science: TEXTILE SCIENCE (BASTXI)**  
B App Sc (Textile Science)  
(SAQA Reg No: 97809, SAQA Credit Value 368 credits, NQF Level 7)

**Purpose of Qualification**

The Bachelor of Applied Science in Textile Science aims to provide a unique blend of practical application and theory which immerses students into wide range of textile related scientific aspects within a specialised area of textile manufacturing and research.

The theoretical underpinnings of this qualification have a core discipline of textile science.

The purpose of this qualification is to equip graduates with the necessary theoretical and scientific knowledge of disciplines and fields of study to be used in an academic or specialised context. Thorough grounding in the knowledge, scientific theory, principles and skills of the career or profession concerned requires an individual who can critically analyse and effectively apply knowledge in the Textile environment. The graduate's knowledge will advantageously position him/her within the textile industry in which he/she can make a valid contribution to the South African Textile Industry and the social and economic climate in general.

Students achieving this qualification will be able to conduct basic research, formulate appropriate responses, develop and improve systems and policy, and combine a wide range of textile related scientific knowledge, skills and experience within specialised areas of the textile sector.

## 10.1 BASTXI Programme Structure (3 Year)

Code	Subjects	Core/ Elective	Level of Study	NQF Level	Assess Method	SAQA Credits	Prerequisites
CSTN101	DUT Cornerstone 101 (IGE)	C	1a	5	CA	12	
ICTL101	Information and Communication Literacy and Skills (IGE)	C	1a	5	CA	8	
CHEM101	Chemistry I	C	1a	5	Ex	12	
PHYS101	Physics I	C	1a	5	Ex	16	
TEIN101	Textile Industry I	C	1a	5	Ex	12	
WPTH101	Weaving Preparation Theory I	C	1b	6	Ex	16	
MATC101	Mathematics I	C	1b	5	Ex	16	
TMSC101	Textile Material Science I	C	1b	6	CA	12	
YSTH101	Yarn Spinning Theory I	C	1b	6	Ex	16	
VWKP101	Values in the Workplace (IGE)	C	2a	5	CA	8	
PROE201	Product Engineering 2	C	2a	6	CA	16	
WERP201	Weaving Principles 2	C	2a	6	Ex	16	Textile Industry I
KNPR201	Knitting Principles 2	C	2a	6	Ex	12	
TCPR201	Textile Colouration Principles 2	C	2a	6	Ex	16	Textile Industry I
TERT201	Textile Research Techniques	C	2b	7	CA	12	Textile Industry I
TETP201	Textile Testing Principles 2	C	2b	6	CA	12	
ITCH101	Introduction to Technopreneurship (IGE)	C	2b	5	CA	8	
ASSD101	Applied Sciences for Sustainable Dev (FGE)	C	2b	6	CA	12	
ASWL101	Applied Science and Wellness (FGE)	C	2b	5	CA	12	
INMA301#	Industrial Management 3	C	3a	7	CA	12	
TTPR301#	Textile Testing Principles 3	C	3a	7	CA	12	Text Testing Princ 2
NWPR301#	Non-Woven Principles 3	C	3a	7	Ex	16	Text Material Sc I
FITH301#	Finishing Theory 3	C	3a	7	Ex	12	
APSS101	Role of Applied Science in Society	E	3a	6	CA	12	
PORP301#	Production Organisation Research Project	C	3b	7	Ex	16	
	<b>Either Dry Option</b>	E					
WERP301#	Weaving Principles 3	C	3b	7	Ex	16	Weaving Principles 2
PROE301#	Product Engineering 3	C	3b	7	CA	16	Product Engineering 2
YSTH301#	Yarn Spinning Theory 3	C	3b	7	Ex	12	Yarn Spinning Th I
	<b>Or Wet Option</b>	E					
COTH301#	Colouration Theory 3	C	3b	7	Ex	16	Text Col Princ 2
CHCP301#	Chemistry and Colour Physics 3	C	3b	7	CA	16	
POSC301#	Polymer Science 3	C	3b	7	Ex	12	Chemistry I

KEY: All subjects/modules are compulsory unless indicated with an \*\* which means it is an Elective option.

Assessment: Ex = examinable; CA = Continuous Assessment (No Final Exam)

Numbers 1 to 3 indicates the year of study, "a"= Semester 1, "b"=Semester 2 (e.g. 2b=Second year, Semester 2)

# These subjects are final level subjects.

A Pre-Req (prerequisite) means this subject must be passed prior to registration for the subsequent subject/module.

## 10.2 Programme Information

### 10.2.1 Academic Integrity (*Programme Information*)

Refer to the DUT General Rules pertaining to academic integrity DUT Rule G13(I)(o) - covering falsification of academic records, plagiarism and cheating. These will be enforced wherever necessary to safeguard the worthiness of our qualifications, and the integrity of the Faculty of Applied Sciences at DUT.

### 10.2.2 Assessment and Moderation (*Programme Information*)

- Assignments must be submitted by due date indicated in the relevant study guide. Late submission will be penalised.
- In the case of a continuous assessment subject (a subject which has no final examination/s or supplementary examination/s) opportunities for reassessment are provided for students who fail assessments. These are stipulated in the relevant study guide.
- Moderation follows the DUT Assessment Policy stipulations. Refer to Programme Rule below.

### 10.2.3 Registration Periods (*Programme Information*)

- All applicants must apply through the Central Applications Office (CAO) by no later than October prior to the year of intended study.
- First time registration will occur in January and for returning students January and July. Not all subjects or modules will be offered in both semesters.

## 10.3 Programme Rules

### 10.3.1 Minimum Admission Requirements (*Programme Rules*)

In addition to DUT Rule G7, the following minimum admission requirements apply for applicants with reference to:-

#### 10.3.1.1 Academic Achievement (*Programme Rules*)

In line with the above, applicants' school leaving academic achievement must comply with one of the following:-

- i) a National Senior Certificate (NSC) with endorsement for diploma/degree entry with the following subjects at the stated minimum ratings
- ii) a Senior Certificate is matriculation exemption with the following subjects at the stated minimum ratings
- iii) a National Certificate (Vocational) Level 4 with statutory requirements for a diploma entrance and the following subjects at the stated minimum ratings

Compulsory Subjects	NSC Rating	Senior Certificate		NCV
		HG	SG	
English	4	D	B	50%
Mathematics	4	D	B	60%
Physical Science	4	D	B	60%

### 10.3.1.2 Admission Requirements based on Work Experience, Age and Maturity; and Recognition of Prior Learning (*Programme Rules*)

The DUT Rules G7(3), and G7(8) respectively, will apply.

### 10.3.1.3 Admission of International Students (*Programme Rules*)

The DUT's Admissions Policy for International Students and DUT Rules G4 and G7(5) will apply.

### 10.3.1.4 Admission of Students from other Institutions (*Programme Rules*)

In addition to the relevant DUT Rules a transferring student will only be accepted if there are places available and the student has met the applicable entrance requirements of the University.

### 10.3.2 Selection Criteria (*Programme Rules*)

In addition to the Minimum Admission Requirements, the following process will determine placement in the programme:

- Initial shortlisting for selection is based on the applicant's academic performance in Grade 12 (Grade 11 or Grade 12 trial marks will be used for current matriculants).
- Provisional acceptance is given to selected applicants awaiting National Senior Certificate (NSC) results. If the final Grade 12 NSC results do not meet the minimum entrance requirements, this provisional acceptance will be withdrawn.
- Final selection will be based on the ranking of applicants who meet the minimum requirements, as well as available places (refer to DUT Rule G5).

### 10.3.3 Pass Requirements (*Programme Rules*)

The DUT Rules G12, G14 and G15 apply.

### 10.3.4 Promotion to a Higher Level/ Progression Rules (*Previously Reregistration Rules*) (*Programme Rules*)

The DUT Rule G16 applies.

### 10.3.5 Exclusion Rules (*Programme Rules*)

In addition to DUT Rule G17, a first year student who fails 50% plus one of the modules with a final result of less than 40% in each subject is not permitted to reregister in this programme. Deregistration from any subjects is subject to the provision of DUT Rule G6A.

### **10.3.6 Interruption of Studies (*Programme Rules*)**

The DUT Rule G6B pertaining to interruption of studies will apply.

### **10.3.7 Attendance and Assessment (*Programme Rules*)**

**10.3.7.1** A student who, for any valid reason (Refer to Programme Rule 7.3.7.2), is absent from a particular practical or test, must provide written proof of the reason for the absence to the lecturer concerned, within five (5) working days of returning to the institution in order to be considered for a special assessment.

**10.3.7.2** The DUT Rule G13(3)(a) which refers to special examinations also refers to special assessments set within departments for students who have missed coursework assessments. In these cases the department will determine the validity of the student's reason for not taking the assessment, and the nature of the special assessment.

### **10.3.8 General Education Modules (*Programme Rule*)**

Students must comply with the university's General Education requirement. This includes the following standalone General Education modules which comprise of:

- 1 DUT Cornerstone 101 module (compulsory)
- 1 Institutional General Education module (compulsory)
- 2 Institutional General Education modules (elective)
- 1 Faculty General Education module (compulsory)
- 2 Faculty General Education modules (elective)
- (Students will select electives modules as indicated in Table 7.1 Programme Structure)

## 11. ADVANCED DIPLOMA IN TEXTILE TECHNOLOGY (ADTXT1)

Adv Dip Textile Technology

(SAQA Reg No: 111315, SAQA Credit Value 120 credits, NQF Level 7)

### Purpose of Qualification

The purpose of this qualification is to provide entry-level specialisation for Bachelor's Degree graduates or diplomates or equivalent, from the field of textile technology. This will be achieved by offering an intensive, focused and applied specialisation which meets the requirements of the niche textile industry.

This qualification allows graduates to continue their specialised development through the inculcation of a deep and systematic understanding of current thinking, practice, theory and methodology in the discipline of Textile Technology.

Students would also be prepared for postgraduate levels of study through the deepening of their knowledge and understanding of theories, methodologies and practices related to Textile Technology. Use of appropriate methods and techniques will allow the student to develop their ability to formulate, undertake and resolve more complex theoretical and practice-related problems and tasks.

### 11.1 PROGRAMME STRUCTURE (3 YEAR)

Code	Subjects	Core/ Elective	Level of Study	NQF Level	Assess Method	SAQA Credits	Prerequisites
TRET401	Textile Research Techniques	C	1a	7	CA	12	
ADPO401	Advanced Production Organisation	C	1a	7	CA	16	
INMA401	Industrial Management	C	1a	7	CA	12	
ATTP401	Advanced Textile Testing Principles	C	1a	7	CA	16	
In second semester students to select either Dry or Wet option :							
	<b>Either Dry Option</b>	E					
AYST401	Advanced Yarn Spinning Theory	C	1b	7	EX	16	
ADWP401	Advanced Weaving Principles	C	1b	7	EX	16	
ADPE401	Advanced Product Engineering	C	1b	7	CA	16	
DRPP401	Dry Processing Project	C	1b	7	CA	16	
	<b>Or Wet Option</b>	E					
CHCP401	Chemistry and Colour Physics	C	1b	7	CA	16	
ADCT401	Advanced Colouration Theory	C	1b	7	EX	16	
POSC401	Polymer Science	C	1b	7	EX	16	
WEPP401	Wet Processing Project	C	1b	7	CA	16	

KEY: All subjects/modules are compulsory unless indicated with an \*\* which means it is an Elective option.

Assessment: Ex = examinable; CA = Continuous Assessment (No Final Exam)

Numbers 1 to 3 indicates the year of study, "a"= Semester 1, "b"=Semester 2 (e.g. 2b=Second year, Semester 2)

A Pre-Req (prerequisite) means this subject must be passed prior to registration for the subsequent subject/module.

## 11.2 PROGRAMME INFORMATION

This information must be read in conjunction with the programme rules that follow.

### 11.2.1 Academic Integrity (*Programme Information*)

Refer to the DUT General Rules pertaining to academic integrity DUT Rule G13(1)(o) - covering falsification of academic records, plagiarism and cheating. These will be enforced wherever necessary to safeguard the worthiness of our qualifications, and the integrity of the Faculty of Applied Sciences at DUT.

### 11.2.2 Assessment and Moderation (*Programme Information*)

- Assignments must be submitted by due date indicated in the relevant study guide. Late submission will be penalised.
- In the case of a continuous assessment subject (a subject which has no final examination/s or supplementary examination/s) opportunities for reassessment are provided for students who fail assessments. These are stipulated in the relevant study guide.
- Moderation follows the DUT Assessment Policy stipulations. Refer to Programme Rule below.

### 11.2.3 Registration Periods (*Programme Information*)

- All applicants must apply directly to the Department of Clothing and Textile Studies by no later than October prior to the year of intended study.
- First time registration will occur in January and for returning students January and July. Not all subjects or modules will be offered in both semesters.

## 11.3 PROGRAMME RULES

### 11.3.1 Minimum Admission Requirements (*Programme Rules*)

In addition to DUT Rule G7, the following minimum admission requirements apply for applicants with reference to:-

#### 11.3.1.1 Academic Achievement (*Programme Rules*)

The minimum admission requirements for this programme are:

- National Diploma in Textile Technology; or
- Diploma Textile Technology; or

A recognized equivalent Diploma/Degree at NQF Level 6

#### 11.3.1.2 Admission Requirements based on Work Experience, Age and Maturity; and Recognition of Prior Learning (*Programme Rules*)

The DUT Rules G7(3), and G7(8) respectively, will apply.

### **11.3.1.3 Admission of International Students (*Programme Rules*)**

The DUT's Admissions Policy for International Students and DUT Rules G4 and G7(5) will apply.

### **11.3.1.4 Admission of Students from other Institutions (*Programme Rules*)**

In addition to the relevant DUT Rules a transferring student will only be accepted if there are places available and the student has met the applicable entrance requirements of the University.

### **11.3.2 Selection Criteria (*Programme Rules*)**

In addition to the Minimum Admission Requirements, the following process will determine placement in the programme:

- Initial shortlisting for selection is based on the applicant's academic performance.
- Final selection will be based on the ranking of applicants who meet the minimum requirements, as well as available places (refer to DUT Rule G5).

### **11.3.3 Pass Requirements (*Programme Rules*)**

The DUT Rules G12, G14 and G15 apply.

### **11.3.4 Promotion to a Higher Level/ Progression Rules (*Previously Reregistration Rules*) (*Programme Rules*)**

The DUT Rule G16 applies.

### **11.3.5 Duration of Programme Offerings**

The DUT Rules G21C(2) and G21C(3) apply.

### **11.3.6 Exclusion Rules (*Programme Rules*)**

The DUT Rules G17 and G21C(3) shall apply to this qualification.

### **11.3.7 Interruption of Studies (*Programme Rules*)**

The DUT Rule G6B pertaining to interruption of studies will apply.

### **11.3.8 Attendance and Assessment (*Programme Rules*)**

**11.3.8.1** A student who, for any valid reason (Refer to Programme Rule 7.3.7.2), is absent from a particular practical or test, must provide written proof of the reason for the absence to the lecturer concerned, within five (5) working days of returning to the institution in order to be considered for a special assessment.



**11.3.8.2** The DUT Rule G13(3)(a) which refers to special examinations also refers to special assessments set within departments for students who have missed coursework assessments. In these cases the department will determine the validity of the student's reason for not taking the assessment, and the nature of the special assessment.

## 12. SHORT COURSES

The following short course is offered on behalf of SADFA by Textile Technology:

<b>Short Course</b>	<b>Approved for Offering</b>	<b>Duration</b>
SADFA Certificate in Dyeing and Finishing	SADFA - 1984	3hrs per week for 3 years.